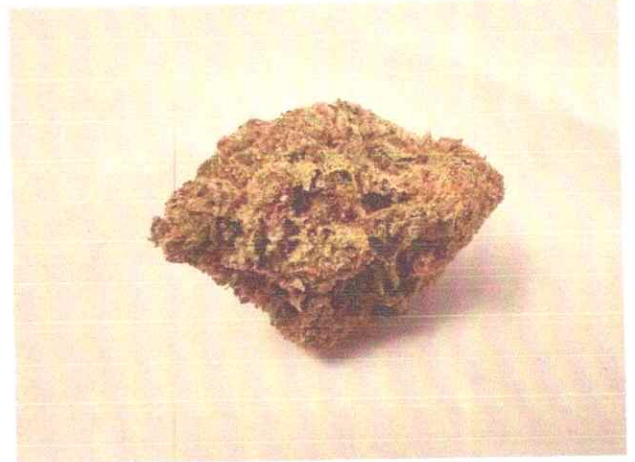


These test results are for Research and Development purposes only

Sample Supernatural  
Strain

<b>0.23%</b>	<b>14.93%</b>	<b>45.78%</b>
$\Delta 9$ THC	Total CBD	Total Cannabinoids
<b>Not tested</b>	<b>Pass</b>	<b>457.8</b>
Water Activity	Moisture	mg / g Total Cannabinoids

Sample ID 24050570290



Harvest/Prod Date

Report Created

5/16/2024

Results Valid Until

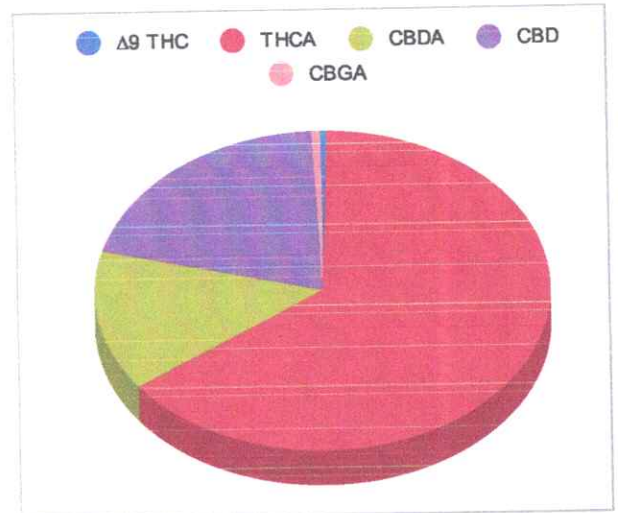
5/17/2025

Sample Extracted  
5/15/2024 8:11:00

Sample Analyzed  
5/15/2024 14:37

Method SOP LO001-R11

Cannabinoids	%Weight	mg/ gram	LOQ(% /w)
$\Delta 9$ THC	0.23	2.3	0.06
THCA	29.55	295.5	0.06
Total THC $(THCA * 0.877) + 9THC$	26.14	261.4	0.06
CBDA	6.52	65.2	0.06
CBD	9.21	92.1	0.06
CBN	<LOQ	<LOQ)	0.06
$\Delta 8$ THC	<LOQ	<LOQ)	0.06
CBC	<LOQ	<LOQ)	0.06
CBGA	0.28	2.8	0.06
CBG	<LOQ	<LOQ)	0.06
CBDV	<LOQ	<LOQ)	0.06
CBDVA	<LOQ	<LOQ)	0.06
THCVA	<LOQ	<LOQ)	0.06
CBDQ	<LOQ	<LOQ)	0.06
HHC	<LOQ	<LOQ)	0.09



Total THC and Total CBD are calculated values per OAR 333-064-0100. Cannabinoid values for plant matter samples are reported on a dry weight basis. Water activity action level is 0.65Aw. LOQ= Limit of Quantitation. NR=Not Reported.

[Rogue Research Lab LLC](http://RogueResearchLab.com)  
[Rogue River, OR 97537](http://RogueRiver,OR97537) Tel. 541-582-1962

[rogueresearchlab.com](http://rogueresearchlab.com)

Craig Berry - Lab Director  
5/16/24



Results pertain to submitted samples only. Rogue Research Lab LLC makes no claims as to the consumer safety or other risks associated with any detected or non-detected amounts of any pesticides, solvents or other adulterants. This report shall not be reproduced, unless in its entirety, without written approval from Rogue Research Lab LLC. Samples were received in good condition and all QC samples met acceptance criteria of the method; data available upon request. For informational purposes only.

# WARNING

All products on this site contain less than 0.3%  $\Delta$ 9THC. The purchaser warrants that they are over 21 and that the products purchased are legal in their jurisdiction. This product should be used only as directed. Consult your doctor/health care provider before use, if you have a medical condition, or are taking any other medications. Do not take if you are pregnant or breastfeeding. Consumption of these products may result in the failure of drug tests. Do not operate heavy machinery following the use of these products. All trademarks and copyrights are property of their respective owners and are not affiliated with nor do they endorse this product. These statements and/or products have not been evaluated by the FDA. These products are not intended to diagnose, treat, cure or prevent any disease. By using this site you agree to follow the Privacy Policy and all Terms & Conditions printed on this site. Void Where Prohibited By Law.

If you plan to market and resell Industrial Hemp products, please be familiar with your state laws and Industrial hemp program. If your state does not have a regulated Industrial Hemp Program, please reference the Agricultural Act of 2018.

BY READING THIS DISCLAIMER AND MAKING A PURCHASE, YOU AGREE THAT YOU FULLY UNDERSTAND ITS CONTENTS AND ARE AWARE THAT THIS IS A RELEASE OF LIABILITY.