



Rogue River Organics

Talent, OR 97540

Sample 150-090723-222

Slurricane (THCA Hemp)

Batch/Lot # SC644.39

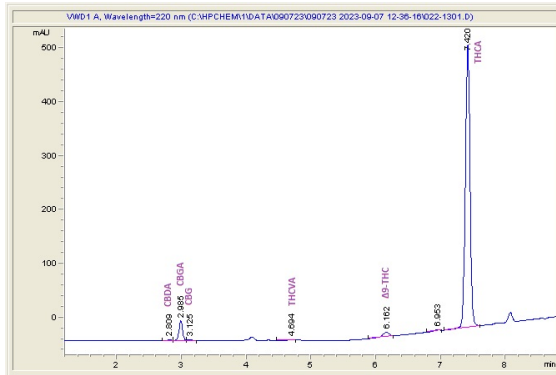
Sample Submitted: 09-07-2023; Report Date: 09-10-2023

Slurricane (THCA Hemp)

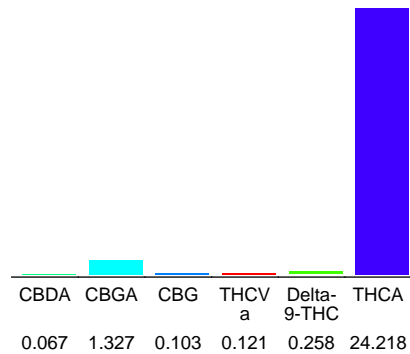
Plant Material: Flower

Batch/Lot # SC644.39

Chromatogram



Cannabinoid Profile



Cannabinoid Profile by HPLC

**0.26%**  
Delta-9-THC

**0.00%**  
CBD

**26.09%**  
Total Cannabinoids

Cannabinoid	% wt	mg/g
CBDA	0.067	0.67
CBGA	1.327	13.27
CBG	0.103	1.03
THCVa	0.121	1.21
Delta-9-THC	0.258	2.58
THCA	24.22	242.18
<b>Total Cannabinoids</b>	<b>26.09</b>	<b>260.9</b>
<b>Calculated Total THC</b>	<b>21.50</b>	<b>214.97</b>
<b>Calculated CBD Yield</b>	<b>0.06</b>	<b>0.59</b>

Calculated Total THC = Delta-9-THC + 0.877 \* THCA

Calculated Maximum CBD Yield = CBD + 0.877 \* CBDA

**Marin Analytics, LLC**

250 Bel Marin Keys Blvd, Suite D4  
Novato, CA 94949

833-321-TEST / info@marinanalytics.com

**Sara Biancalana**  
Chief Scientist